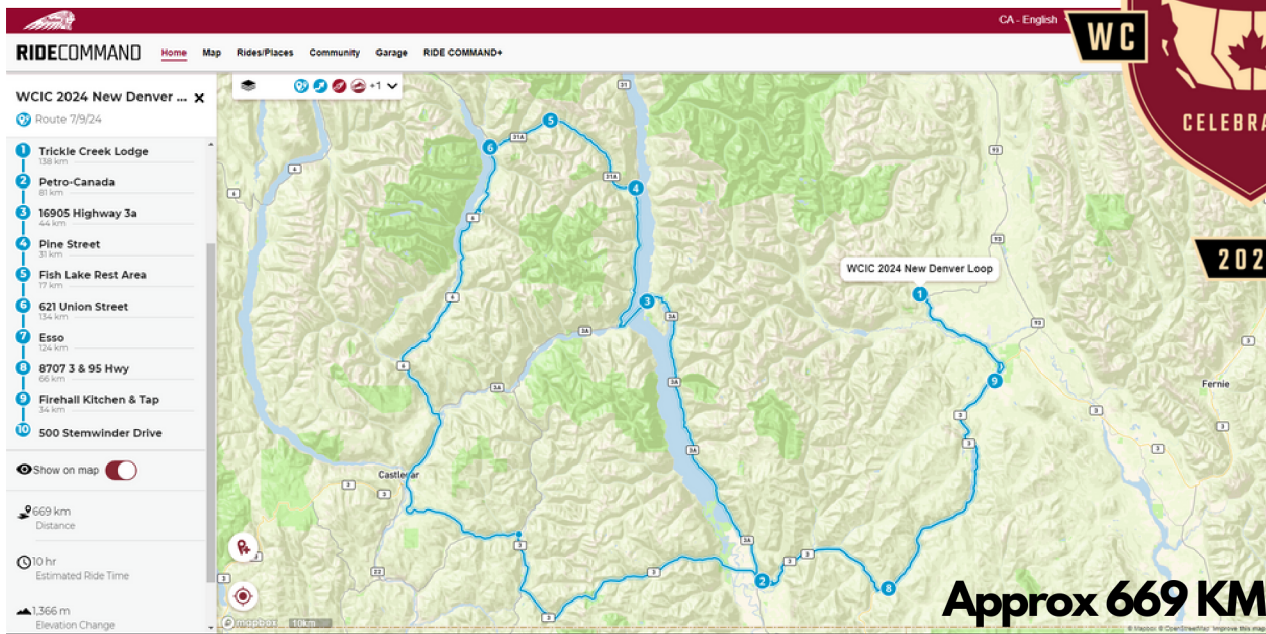


New Denver Route



This is an amazing loop from Kimberley enjoying 2 of British Columbias best motorcycle roads, 3A along Kootenay Lake and 31A from Kaslo to New Denver. As this is quite a long day ride this will be the first ride to depart and stops will be kept short. Lunch will be enjoyed lakeside along 31A. We will be stopping at Kaslo Golf Course to allow riders to purchase bagged lunches (Thick sandwich with 4 oz meat, fruit, muffin, and drink \$12, (fruit can be apple, orange or banana. Drink bottle of water, juice or pop as you choice)), or you can of course pack your own from the start. Dinner has also been arranged at Fire Hall Kitchen and Tap in Cranbrook on a limited menu before we return to Trickle Creek in time for nightly raffles.

- 1 - Start – Trickle Creek Lodge
- 2 – Fuel at Creston Petro-Can
- 3 – Kootenay Bay ferry terminal (Catching 10:40AM PST ferry)
- 4 – Kaslo golf course (Bagged lunch purchase available)
- 5 – Lunch at Fish Lake rest area
- 6 – Fuel at New Denver Canco
- 7 – Fuel at Salmo Esso
- 8 – Ice Cream in Yahk at 2 Scoop Steve’s (Possible stop, will see how crew feels in Salmo)
- 9 – Dinner in Cranbrook at Fire Hall Kitchen and Tap
- 10 – Finish – Trickle Creek Lodge



Scan this QR code for the GPX File

Scan the QR code to pull up the route in the RideCommand APP

